



615 Cumberland Street,
Lebanon, PA 17042

Lebanon Family Health Services forbids discrimination against any employee, applicant for employment, independent contractor, client, or any other person based on race, ethnicity, age, gender, religious affiliation, ancestry, union membership, sexual orientation, gender expression or identity, national origin, legal residence, ability to pay, parenthood, marital relationship, contraceptive preference, AIDS or HIV status, or disability.

RETURN SERVICE REQUESTED

Non-Profit
Organization
U.S. Postage
PAID
Lebanon, PA
Permit No. 27



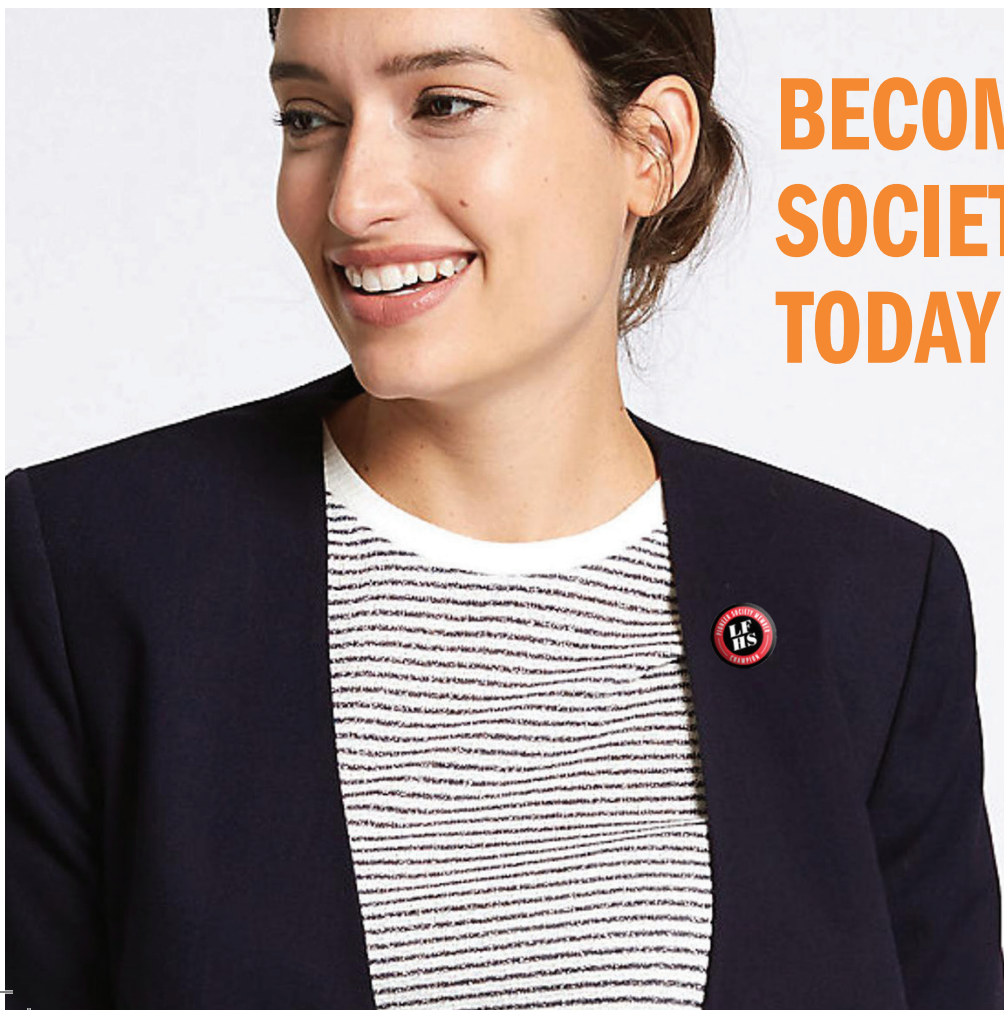
A Legacy of Giving.



**Fiscal Year
23/24
Annual Report**

BECOME A PIONEER SOCIETY MEMBER, TODAY!

Becoming a Pioneer Society member is easy! Simply continue making regular contributions to Lebanon Family Health Services until your annual total reaches the Pioneer Society level of your choice. For more information about the Pioneer Society and its many benefits, contact **Vicki DeLoatch** at vicki@lebanonfamilyhealth.org or call 717-273-8893.



Together for Better Health.



Message from the President & CEO, Kimberly Kreider Umble

When we first opened our doors in 1973 the world of women's health was a much different place. As we celebrated our 50th Anniversary this past year, we took time to remember how our journey began as we met the reproductive health needs of 300 women in our community that first year. Today, LFHS provides almost 40,000 visits to almost 15,000 men, women and children. In our 50 plus years of growth, we have arrived as a trusted member of our local health care industry.

We continue to be at the forefront of the needs of our community, adapting and changing to ensure growth. This year we saw the addition of a reproductive health kiosk, that allows 24-hour access to a multitude of health products. The innovation of this kiosk allows us to provide access for individuals seeking reproductive health support and other resources at no cost to the

individuals. Because of this, we are able to provide much needed resources in the moment they are needed. Through the removal of barriers, we are able to increase access for our clients, patients and community.

We are also addressing needs through our WIC (Women, Infants, and Children) program. Approximately 53% of all babies born in Lebanon County receive WIC, which focuses on helping pregnant women, mothers and caregivers of infants and young children learn about good nutrition to keep their families healthy.

Education is the life blood of who we are as an organization. Through our multitude of educational programs, this past year we were able to provide 127 presentations to 1,082 individuals. The range of our education programs serves individuals in all stages of life.

As we continue to navigate toward the future, we are fueled

by the endless possibilities that lie before us. The opportunity to grow and evolve our services to meet the needs of our patients and clients drives us forward. Reproductive justice and health equity is not only what we do, it is who we are . . . an organization that cares for our community, an organization that represents hope, respect, and opportunity for each and every individual that walks through our doors. We seek to work ***Together for Better Health!***

Sincerely,

A handwritten signature in black ink, appearing to read 'Kim'.

Kimberly Kreider Umble
President and CEO



COMMUNITY EDUCATION & TOBACCO CONTROL

Our education programs strive to be an agent for change driven by the needs of the community we serve. For over a decade we have kept our finger on the pulse of the growing youth vaping epidemic. We have educated and spoken to community

leaders, parent and legislators about the need to provide evidence-based programs that address these issues. We are now at a similar juncture with the co-occurrence of substance use and mental health needs for our youth. There has been an increase in the number of reports of depression and suicide

attempts among county youth. This trend has been illustrated in the Pennsylvania Youth Survey (PAYS) data, Student Assistance Program (SAP) referrals and assessments, as well as in the Department of Drug and Alcohol Programs (DDAP) needs assessment. Efforts to create more community and school-based

support for youth and adults struggling with depression and suicide often feel insurmountable. Community risk factors like limited resources, long waitlists, low neighborhood attachment, and low reward for pro-social community involvement are consistently identified in the county's PAYS data.

This has led us to expand the Lebanon County Tobacco and Vaping Coalition to the Lebanon County Substance Abuse Coalition to address these changing needs. In partnership with The Community Health Council and EmPower The Mind we made this shift to accommodate the growing needs for services. This was also a catalyst for implementation of the Teen Intervene program. This is an evidence-based intervention program focused on helping teens that are experiencing mild to moderate substance use with THC+, alcohol and other drugs. Teen Intervene provides one-on-one cessation intervention that provides drug specific lessons and information to help the student. This program is teamed with continued one-on-one or group counseling to provide support to the

student. This effort is a great example of collaboration with other organizations and how need drives the direction of programming.

The addition of Teen Intervene has built on the foundation and success that INDEPTH (Intervention to Nicotine Dependence, Education, Prevention, Tobacco and Health) and the N-O-T (Not On Tobacco®) programs have had within the schools for the past several years. This year we provided 21 INDEPTH programs that served 53 students with 84 hours of instruction.

In addition to growing our INDEPTH, N-O-T and Teen Intervene curriculums through collaboration and community partnerships, we have also maintained our other education programs. We worked with numerous worksites to provide technical assistance in strengthening their smoking/vaping policy or providing cessation services. These included the Sexual Assault Resource and Counseling Center (SARCC), WellSpan, The LGBT Center of Reading in Lebanon, Lebanon Rescue Mission and Lebanon County Student Assistance

Program. We have also maintained our adult cessation programming through Freedom From Smoking® serving 26 individuals this year. We maintained our relationships with local schools to continue providing our teen programs, Tobacco Resistance Unit (TRU) and the Personal Responsibility Education Program (PREP), teen sexuality education program. Our parenting programming, Be The One, saw over 45 parents between our Young Child and Adolescent Classes. Lastly, we continued offering the traditional T2: Diabetes Prevention Program© and the app-based Diabetes Prevention Program, Health And Lifestyle Training (HALT).

Our education team provided 571 hours of service teaching 308 evidence-based lessons to almost 321 individuals this fiscal year.

Through collaboration and innovation, we are better able to meet those needs and provide vital interventions that drive impactful change for those we serve, and ensure that we are working **Together for Better Health.**

COMMUNICATIONS AND OUTREACH

This year we took strides to continue promotion of our vital services to the community and to improve our patient and client experience.

Social Media remains at the forefront of how we communicate with our patients and clients. We continued to utilize Facebook, Twitter and Instagram. We also expanded TikTok this year to engage the younger demographic that utilize our services. We incorporated weekly highlights like WIC Tip Tuesday to engage our clients with our social media channels and to promote our clients visiting those channels on a regular basis. Facebook increased this year by 7.33%, Instagram increased by 21.63% and TikTok by 34.71%.

While technological innovation is important, we also participated in numerous in-person events to reach out to the community. We once again enjoyed our “Farm to Table” and Health Fair events in addition to other community events such as National Night Out, Trunk or Treat, Back to

School Events, Backpack Give Away and the 6th and Chestnut St. Block Party. We provided 127 presentations to 1082 individuals this year. These community presentations included Kochenderfer Day Care, U-Gro Learning Center, Luthercare, Annville-Cleona School District, Cornwall- Lebanon School District, Lebanon School District, Northern Lebanon Middle School, Palmyra School District, Yellow Breeches Education Center, Lebanon Valley College, Lebanon County Council of Human Service Agencies, Bell & Evans, and Elizabethtown College.

We created a campaign this year focused on promotion of our reproductive health services entitled “Are YOU Ready!?”. This campaign allowed us to engage with and inform the community about the variety of services we provide and how they can access them. The “Are YOU Ready!?” campaign incorporated information about birth control options, the importance of access to regular STI testing, how to create your reproductive life plan, the availability of

prenatal services, and so much more. This campaign has been successful across our platforms in creating access to the wide variety of services we provide.

Being social media based appeals to a young adult demographic that can benefit from our care. We are expanding access and empowering individuals to take control of their reproductive future as we work ***Together for Better Health.***





REPRODUCTIVE HEALTH

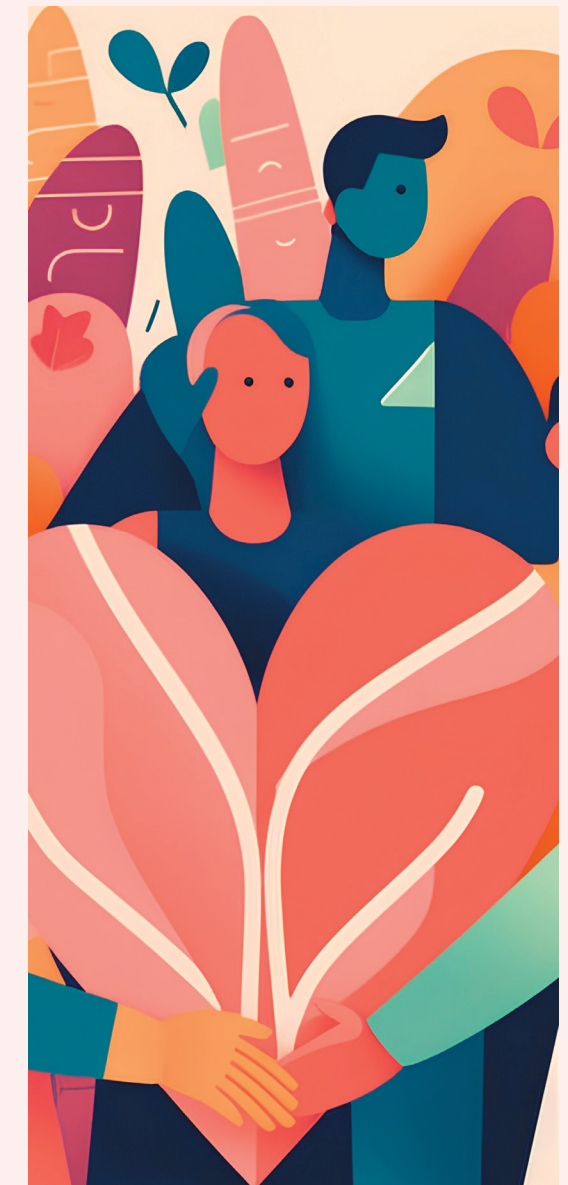
With more than 50 years of service in the Lebanon community, we have seen many changes in reproductive health and how our patients and clients can access their care. We are proud to have expanded access to these vital services, offering a range of contraceptive options and empowering individuals to take charge of their reproductive futures. We're especially excited to be one of the first organizations in Pennsylvania to introduce a reproductive health kiosk.

This kiosk, available 24/7, offers a wide range of free products, including condoms, at-home STI testing kits, menstrual products, emergency contraceptives, pregnancy tests, safer sex kits, COVID tests, Narcan, and fentanyl test strips. It provides essential resources when people need them most and breaks down barriers to access by reducing stigma and making products available outside traditional office hours.

Lebanon Family Health Services proudly holds the state contract with the PA Department of Health to provide free STI testing and treatment when needed. These services are confidential and free for individuals without insurance or those who prefer not to use private insurance. We serve both men and women, with walk-in appointments welcome. To support this program, we hosted an STI Awareness Day on March 14, encouraging individuals ages 15–24 to get tested as part of routine healthcare. Our ongoing partnership with WellSpan Family Medicine brings prenatal care to our offices, helping keep mothers and babies healthy. This year, we provided 419 prenatal visits,

with most patients beginning care in the first trimester.

As we look ahead, we are committed to adapting to the evolving needs of our clients and patients. Through innovative solutions like our kiosk, we're dedicated to improving access to care and working **Together for Better Health.**



ANCILLARY SERVICES

In 2020, we made sports physicals free for everyone, and in January 2023, we added free driver's license physicals for teens. This expansion has given us the opportunity to partner more closely with our community and increase awareness about the affordable healthcare options we provide. Thanks to these efforts, we've seen an increase in physicals this year!

We're proud to be a trusted resource for employment

services, offering employment physicals, drug screenings, and TB testing to meet the needs of local employers. These essential services have helped us build valuable partnerships with businesses in our area, creating a positive impact for everyone involved.

At the heart of our mission is a commitment to breaking down barriers to healthcare access. We believe everyone deserves affordable, convenient care when they need it. One way we support this is through our Convenient Care services,

where we provide testing and treatment for common illnesses such as strep throat, mononucleosis, pink eye, ear infections, flu, sinus infections, upper respiratory infections, and urinary tract infections. These services are offered at a low cost, and we can even provide medications on-site as needed to help our community stay healthy and strong as we work **Together for Better Health.**



WIC

Lebanon Family Health Services' WIC Program celebrated its 44th year of helping low- to mid-income families in Lebanon County improve their nutritional health. In our first month of operation (March 1980) 105 clients received benefits. Today, the WIC Program serves over 2,325 individuals each month.

The Farmers Market Nutrition Program (FMNP) provided pregnant, breastfeeding, and postpartum women and children ages 6 months -5 years enrolled in WIC with vouchers to purchase Pennsylvania-grown produce at participating farmer's markets throughout the state. Three-thousand vouchers were issued to eligible WIC participants. This year, the redemption rate increased over 7%. In an effort to improve this rate, LFHS implemented our Farm-to-Table event several years ago and it continues today. Another initiative incorporated to create easier access to produce was to bring the farmers market to our facility. Each Wednesday, June through November, grab bags were available at our facility filled with various

types of seasonal produce. Individuals were able to use FNMP vouchers to purchase the produce. Fiscal year 2023 marked the 37th year that the FMNP was available for eligible families in Lebanon County. This program continues to be extremely beneficial for all involved.

August 1 - 7 was designated as the annual celebration of World Breastfeeding Week. The theme for this year's event was "Let's Make Breastfeeding and Work, Work". Social media posts helped to mark the week, supporting and encouraging breastfeeding moms.

born to moms enrolled in WIC during pregnancy received a blanket, booties, and bib set. Several churches, civic organizations and individuals used blankets, booties and bibs as a special project for their congregations or groups. This show of support by the community was greatly appreciated by the recipients of the program and is a great example of how we work **Together for Better Health.**



FUNDRAISING, DEVELOPMENT & FINANCE

The celebration of LFHS 50th anniversary year began in January 2023 and continued through December 2023. Special giving opportunities were provided which included 50th anniversary sponsors, special event sponsorships and connection to the H.E.R.O. (Health Equity with Recurring Openhearted Gifts) Club to encourage monthly giving.

Special events this fiscal year included the Erma M. Kapp Memorial Golf Tournament held in August at Lebanon Valley Golf Course, Think Pink Month during the month of October, the Travel & Leisure Auction held at Warehouse 435 in November and Splash of Color held at Iron Valley Golf Club in May. The EMK golf tournament featured special 50th anniversary sponsor levels, with 4 anniversary sponsors obtained. During Think Pink month, a new Pink Soiree event was added in celebration of the anniversary year and will continue as an annual event. Auction events (Travel & Leisure Auction and Splash of Color) continued with an online component to allow patrons to bid on silent

auction items even if they did not attend the events. 50th anniversary sponsors including a Gold sponsorship of \$50,000 from Ed and Jeanne Arnold and an Emerald sponsorship of \$25,000 from Jonestown Bank and Trust Co. which helped to support 50th anniversary activities and events.

Our friends and neighbors supported LFHS through fundraising special events, sponsorship to support our Annual Dinner and Health Fair and contributions to support LFHS services. This philanthropic support totaled almost \$376,000, an increase of 17.5% over last fiscal year.

Throughout our history, we have continued to diversify our services to meet the unique community health needs. The wide array of programs we provide are financed from many sources. For example, our lung health programs (including the new youth vaping intervention) is funded by The American Lung Association and the PA Department of Health. Our Mobile Unit was funded through a WellSpan Imagine

Grant, our Basics initiative is funded through The United Way of Lebanon County, and The Foundation for Enhancing Communities and our Teen Intervene program is funded by a grant from Pennsylvania Commission on Crime and Delinquency and The Dixon Foundation. New initiatives funded this year included the Women's Health Services and Teen Pregnancy Prevention programs. Grants received this fiscal year totaled over \$515,000.

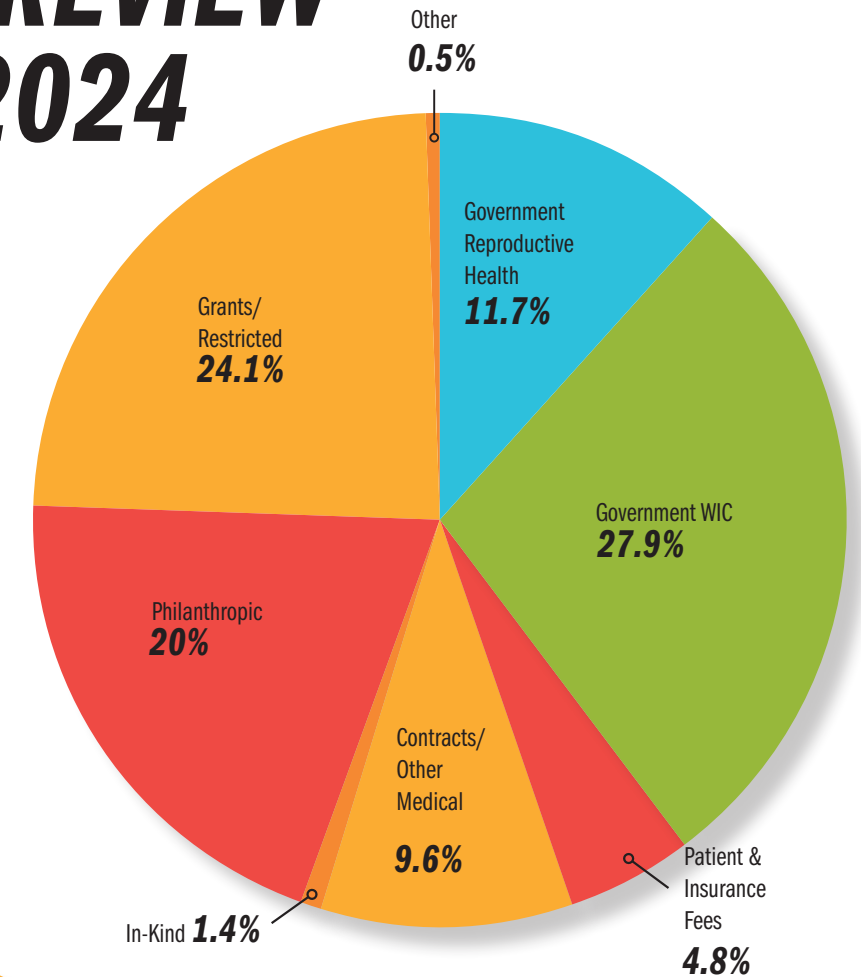
These fundraising efforts and philanthropic support allow us to meet the needs within our community and work **Together for Better Health.**

Looking to support our mission? Donate today by scanning the code below!

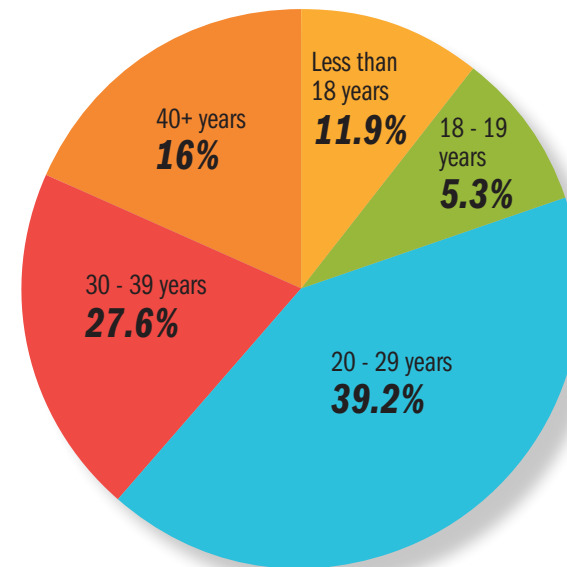


YEAR IN REVIEW 2023 - 2024

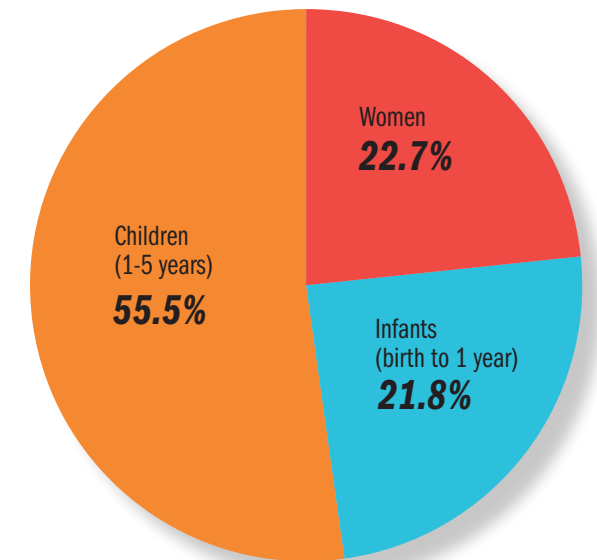
FUNDING BREAKDOWN CALCULATIONS - FISCAL YEAR 2023-2024



POPULATION SERVED IN REPRODUCTIVE HEALTH PROGRAMS BY AGE



POPULATION SERVED IN WIC PROGRAM



* All data prior to final audited reports.

Following is a partial list of individuals who have contributed toward our 2023-24 annual appeal and provided sponsorships for special events. Approximately 10% of our donors choose to list their contributions as anonymous or as a "Friend of Family Health." Many donors who gave in memory or in honor of a friend or a loved one gave more than one gift this fiscal year.

OUR DEEPEST GRATITUDE AND THANKS TO THE GENEROUS SUPPORT OF OUR DONORS, SPONSORS & PARTNERS!

50TH ANNIVERSARY SPONSORS:

Ed & Jeanne Arnold
Jonestown Bank & Trust

DONORS:

Dr. & Mrs. Martin Adickman
in memory of Anita Winer
Steve & Susan Alger
Harry Allen
Mary Lou Allmon
Lauren Allwein-Andrews
Iris Alster
Maria Amato-Hernandez
Stephanie Andreozzi
Gary & Kathy Andrews
Annville VFW, Richard H. Weber
Post 8023
Alicia Arnold
David Arnold
Ed & Jeanne Arnold
Jeff & Ann Arnold
John Barton
Nancy Basselgia
Mike & Julie Battistelli
Phil & Sue Billings
Ron & Marilyn Boogaard
in memory of Anita Winer
M. Steven Bortner
in memory of Michael Barrett
Sue Bowman Keith
Henry Lee Boyd
Marty & Patti Brandt
Chip & Donna Brightbill
Leslie Bures
in honor of Susan Wood
Ray & Leslie Bures
Carlyle Family Fund
Thomas Carmany, M.D. &
Emily Guilleams
in memory of Michael Barrett
& in honor of Susan Wood
Susan Casey
in honor of Susan Wood
Linda L. Castagna
Barb Charles
Christ Church United Church
of Christ, Annville
Art & Michele Clagett
Joseph & Judith Clark
Dr. George Conner
Dawn Darkes
John & Connie Davis
Ann Decker
in memory of Michael Barrett

Ken & Vicki DeLoatch
in memory of Michael Barrett
& in honor of Susan Wood
Wendy Dietrich
in honor of Susan Wood
Patty Donley
Travis & Courtney Donmoyer
Mark & Dorothy Dutchess
in memory of Michael Barrett
Wayne Doxide
in memory of Michael Barrett
Eagles 472, Inc.
Robert & Anita Eby
Betty Eiceman
in memory of Michael Barrett
David & JoAnn Eiceman
in memory of Dale Eiceman
& Bob Werth
Willie & Linda Erb
in honor of Liane Lambert
John Eyster
in honor of Jill Fidler
Dr. George & Margaret Fava
John & Elaine Feather
Phil & Judy Feather
in memory of Susan Wolf
Liz Feller
Rick & Vicki Fern
Friends of Family Health
in memory of Bob &
Diana Heilman
Ryan Fretz
in honor of Susan Wood
Dave & Laurie Funk
Ken & Julie Funk
in memory of Nancy Funk
Robert & Maureen Funk
Ronald J. Garman
in memory of Nadia K.
Garman
Lisa Gehenio
Larry & Sandy Geib
Debra Gingrich
in memory of Michael Barrett
Lonna Goshert
Diane Griffiths
in memory of Anita Winer
Jerry & Cheryl Guerrisi
Walter Haber
Wendy Hanford
David & Barbara Hartman
in memory of Virginia &
Henry Hartman
Fritz Heilman
Sylvia Hepler
in honor of LFHS staff
Bev Heishman

Fred & Kim Hermanson
Ronald & Kathleen Hetrick
in memory of Michael Barrett,
Nancy Funk & Mary Louise
Sherk
James Hipolit
in honor of Susan Wood
Lynn Hirsch
in memory of Anita Winer
Sidney Hostetter & Evelyn Koppel
Susan Hostetter
in honor of Susan Wood
Dan & Pat Hottenstein
Pat Hottenstein
in honor of Susan Wood
Mitch & Phyllis Huber
Carol Hunter
in honor of Susan Wood
Kathy Jesiolowski
Kristen Lee Jones
in memory of Michael Barrett
Jonestown Bank & Trust Co.
Donna Kaplan
in memory of Eleanor
Hersch Green
Kevin & Maine Keith
Kathryn Kennedy-Medina
in memory of Anita Winer
Jean Kilheffer Hess
in honor of Susan Wood
Dr. Barbara Klatchko
Regina Koontz
in honor of Susan Wood
Kimberly Kreider Umble
in memory of Michael Barrett
& in honor of Susan Wood
& Board Members
Michael & Margaret Kreiser
Ron & Jennifer Kuzo
Ann Marie Lasky
in memory of Patricia Hain &
in honor of Thursday Morning
Breakfast Group
Jon & Jody Lebo
Joseph & Donna Lescisko
Elizabeth Lincoln
in honor of Susan Wood
Ginny Lewis-McLaughlin
Dan & Sylvia Lineaweaver
Brad & Emmily Longenecker
Elaine Ludwig
MacDonald & Vaccaro
Insurance Agency
Jeremy & Emily Maisto
Marc Malberg
in memory of Anita Winer

Marty & Jo Margolis
in memory of Anita Winer
Ed Martel
William & Jill Matthews in memory
of Isabel Matthews
Gordon & Gayle Kohl Matthew
Roberta Maxwell
in honor of Susan Wood
Lynn Hirsch
in memory of Anita Winer
Tim & Sue McShane
Dr. Susan Medalie
Sandy Meluskey
Rod & Joy Meyer
Brian & Kelly Miller
Tony & Tiffany Miller
Cathy Mintz
in memory of Anita Winer
Julie Mintz
in honor of Susan Wood
Maureen Mulligan
in honor of Susan Wood
Heidi L. Neiswender
Elise Nelson
in memory of Virginia
Wilke Nelson
Linda Nicoll
in memory of Anita Winer
Nancy Odegard
in honor of Susan Wood
Tom Overholt & Abby Griffin
Overholt
Wiley & Jackie Parker
Bob & Brenda Phillips
Kathie Phillips
in memory of Michael Barrett
Bob Pozesky & Oneida DeLuca
Andrew Reigle & Richard Adesida
Curtis & Tara Reigle
Diana Reilly
Mr. & Mrs. Lee R. Rhodes, Jr.
Ed & Susan Robb
Drs. Daniel P. & Lorraine A. Rollo
Debra Ronning
in honor of Susan Wood
John Rose & Joan Weaver
Carl & Joan Royer
in honor of Susan Wood
Glenn & Mev Royer
Cheryl Rudin
in memory of Anita Winer
Csaba & Flavia Rusznak
in memory of Anita Winer
Dr. John Salahub
Paula Saltzman
in memory of Anita Winer
Alletta Manbeck Schadler
Nate & Megan Schickling
Cindy Schlegel

Michael Schroeder &
Karen Feather
Ron & Jamie Sell
Michael Shank
in honor of Susan Wood
Ben Shankroff
Mike & Joan Sherman
Jeff & Pam Shirk
Jill Shoemaker
Thomas Shott
Bonnie Shuey
Doug & Michelle Shuff
Kaj Skov
Soon Slayman
Lee & Sally Smedley
Katherine Smith
in memory of Anita Winer
Todd Snovel
St. Luke Evangelical
Lutheran Church
David & Joleen Stein
Andrea Stewart
in honor of Susan Wood
Suzanne Stewart
in honor of Susan Wood
AJ & Elizabeth Surmacz
Olivia M. Susskind
Brian & Kristen Sweeney
Ted & Sue Szydowski
Chris Taylor
Bob & Joan Terwilliger
The Harrisburg Bridge Club
in memory of Anita Winer
Debbie Tice
in honor of Susan Wood
Timeless Café
Thomas & Marianne Turnbaugh
Lee & Cheryl Umberger
Eric Umble
in honor of Kimberly
Kreider Umble
Vicki Van Hise
Nadeen Van Tuyle
in honor of Susan Wood
Albertine Washington
in memory of Anita Winer &
Mary Louise Sherk
Scott & Debbie Weaver,
APR Supply Co.
Sharon Weaver
in memory of
Michael Barrett
John Wentling
Dave & Donna Williams
Trevor & Allison Williams
Dr. Stephen & Anita Winer*
Al & Anita Winn
in memory of
Michael Barrett
Alfred Winne
in memory of Anita Winer
Becky Witherite
Tom Wolf
in memory of Susan Wolf
Fred & Kathy Wolfson
in memory of
Michael Barrett &
in honor of annual
mammograms

(*deceased)

David & Susan Wood
Kim Wood
in honor of Susan Wood
Barry & Meltem Wood
in honor of Susan Wood
Zach Worley & Maggie Progin
Kelsey Youngman
in honor of Susan Wood
Ralph Zimmerman
in honor of Susan Wood
Joel & Judith Zinn
Zion Goshert UCC

SPONSORS & PARTNERSHIPS

Steve & Susan Alger
American Lung Association
in Pennsylvania
Ancestor Coffee House &
Creperie
Gary & Kathy Andrews
Annville Hershey Sertoma
APR Supply Co.
Are and Be Café
Beers & Hoffman, LTD
Michelle Biever
Blose Signs
Blue Bird Inn
Blue Scope
Ron & Marilyn Boogaard
Bouquet Mulligan DeMaio
Bowman/Byerly Insurance
Agency
Boyer's Tavern
Brown's Cleaning
Buzgon Davis Law
Byler Holdings
Cakes by Moraima & Café
Capital Blue Cross
Thomas Carmany, M.D. &
Emily Guilleams
Carriage House Car Wash
Carriage House Style &
The Farm Chix
CFC Pest Solutions
City Watch Coffee, LLC
Classic Touch Spa & Salon
Comprehensive Financial & PA
Pension Planners
E & E Discount Beer Warehouse
E & E Metal Fab, Inc.
Betty Eiceman
Family First Health
Family Health Council of
Central Pennsylvania
Fava & Maria Eye Associates
Rick & Vicki Fern
Fox's Transport, Inc.
Franklin House Tavern
Fredericksburg Eagle Hotel
Fresh Creative, Inc.
Fulton Bank
Funch's Restaurant & Bar
Arthur Funk & Sons, Inc.
Gallagher Printing
Garcia, Garman & Shea, PC
Gin Mill
Gingrich Insurance Agency
Good, Firestone & Remlinger

Guaranteed Rate
Guernsey Office Products
Gus Deraco's
The Heisey Family
Holey Truth Body Art
Johnny & Hons
Kristen Jones
Jonestown Bank & Trust Co.
Just Like Family Home Health
Care Services
Kapp Advertising Service, Inc.
Kleinfelter's Auction
Kreamer Funeral Home
Lebanon Country Club
Lebanon Federal Credit Union
Lebanon Kiwanis Club
Lebanon Picture Frame
Lebanon Valley Craft Brewery
Lebanon Valley Golf
Lebanon Valley Sertoma Club
Leitzel's Jewelry
Leshner Mack Sales & Service
Level Eleven Art
Department, LLC
Emmily Longenecker Team -
Iron Valley Real Estate
Members 1st Federal
Credit Union
Miner's Pub Restaurant
Mt. Gretna Hideaway
Myerstown Beverage
John C. Olivo Memorial Fund
Parks & Company
Bob & Brenda Phillips
Precision, LLC
Quentin Grove
Quentin Tavern
Rising Sun Bar & Kitchen
Ed & Susan Robb
Royal Oaks Golf Club
RJ Sell's Body Shop
Schaylor Brewing Company
Shenk's Floor Covering
Snitz Creek Brewery - Annville
Snitz Creek Brewery - Lebanon
State Farm, Robert Phillips
Steckbeck Engineering
Dr. Robert & Amy Stevenson
Stifel
Strickler Insurance
Sunset Realty
Swatara Coffee Company -
Annville & Jonestown
The Downtown Lounge
The Foundation for Enhancing
Communities
Timeless Café
United Way of Lebanon County
UPMC in Central PA and UPMC
Health Plan
Visit Lebanon Valley
Visiting Nurse Association
Foundation of Lebanon
County
Wagner Landscaping
WellSpan Health System
David & Susan Wood
Yocum & Co.
Yoga for You

PIONEER GIVING SOCIETY



CHAMPIONS
Ed & Jeanne Arnold
Bob & Joan Terwilliger
WellSpan Health



VOYAGERS
Carlyle Family Foundation
Dave & Laurie Funk
Jonestown Bank & Trust Co.
John C. Olivo Memorial Fund
David & Susan Wood



PATHFINDERS
American Lung Association
John Barton
Capital Blue Cross
Glenn & Mev Royer
RJ Sell's Body Shop,
Ron & Jamie Sell
Sunset Realty
UPMC in Central PA and
UPMC Health Plan



TRAVELERS
Mike & Julie Battistelli
Ray & Leslie Bures
Ken & Julie Funk
Gingrich Insurance
Just Like Family
Lebanon Federal
Credit Union
Leitzel's Jewelry
Members 1st Federal
Credit Union
Raymond Wentling Trust



EXPLORERS
Arthur Funk & Sons, Inc.
Blue Scope
Ron & Marilyn Boogaard
Marty & Patti Brandt

Thomas Carmany, M.D. &
Emily Guilleams
Vicki DeLoatch
John & Elaine Feather
Rick & Vicki Fern
Bob & Maureen Funk
Lary & Sandy Geib
Ed & Susan Robb
Heisey
Kristen Jones
Kreamer Funeral Home
Kimberly Kreider Umble
Dr. Susan Medalie
Bob & Brenda Phillips
Ed & Susan Robb
Alletta Manbeck Schadler
Benjamin Shankroff
Soon Slayman
Lee & Cheryl Umberger
Visit Lebanon Valley
Albertine Washington
Scott & Debbie Weaver,
APR Supply
Donna Williams
Dr. Stephen &
Anita Winer*
Tom Wolf
Zach Worley &
Maggie Progin

H.E.R.O. CLUB
Maria Amato-Hernandez
Henry Lee Boyd
Kristen Jones
Dr. Susan Medalie
Cindy Schlegel
Lee & Cheryl Umberger
Donna Williams
Zach Worley &
Maggie Progin